



VoIP KN519C Emergency Telephone

DESCRIPTION ITEM NO.KN519A-C

Working at -40°C~+70°C hazardous pure industrial environment
4 ~100 I/O output and input for external control
Support WAN/LAN, Duplex Intercom, Echo Cancellation, Upgrade Online
With Camera optional
With TFT display and Camera optional
Web page up to 50+ IP station group/direct call without IPPBX
Adjustable sound volume
IP address Sound reporting or LCD display
Door phone RFID card reader available upon request
Board cast amplifier for paging option
CCTV trigger available
SIP 2.0 and private protocol
5 years warranty

Features

1. Industrial PCB, supports working at -40 °C + 75 °C 2.
- 7" digital TFT-LCD display screen
3. HD voice with high quality headset/HD voice in speakerphone mode
4. Support 3 SIP account as backup and supports log in different server.
5. Supports TR069 (Optoin)
6. Supports dry contact. (Optoin) 7.
- Incoming calling ring, customized the time 8.
- FTP uploading
9. Support intercom setting. Remote/local/password to open the door
10. Customized face recognition
11. Echo cancellation



SPECIFICATION

- | | | | |
|--|--------------------|---|---------------------------------|
| 1. Calling display | 2. Auto answer | VOIP Telephone | BI-Directional Video telephone |
| 3. Auto release the calling | 4. Hotline setting | Scratch resistant, | HD Screen |
| 5. Supports speed dial, group dial and rolling dial | | SIP supports 5 SIP servers | SIP 2.0 Support |
| 6. Point to point calling, no need server | | TR069(Option) | |
| 7. Microphone Volume adjustment | | 7" digital TFT-LCD of 1024 x 600 pixels with Visual | angle adjustable display screen |
| 8. Voice Codes: G.711 A, G.711 MU, G.723, G.729, G.726 | | sensor camera with 5Mega pixels | 2xLAN, PoE, USB |
| 9. Video Codes: H.264 | | TWO group of speed dial for emergency call. | |
| 10. Data backup, restore factory setting | | Protection: About IP65 (IP66 Optoin) | |
| 11. SIP 2.0, SIP Info(DTMF), RFC 2833(DTMF) | | Speaker: 8 ohm 1.5W, loudness 85dB(A) to 65dB(A) | |
| 12. Supports TCP, UDP, ICMP, RARP, APR, NTP | | MIC's working distance 80cm | |
| 13. Upgrading online | | Ring: >95dB. Coverage 1.5m radius | |
| 14. Supports POE(802.3af) | | The call button is flash when ring, lighting during a | call, off when standby. |
| 15. Supports DHCP/Static/PPPOE | | HD voice with high quality headset/HD voice in | speakerphone mode |
| 16. Supports HTTP/HTTPS | | | |
| 17. Two RJ45 Lan 10/100M | | | |

TFT Screen features

Voice Codecs: G.711a/u, G.7231 high/low, G.729a/b, G.722, G.726, iLBC, AMR-NB; AMR-WB

Video codecs: H.263, H.264, MPEG4 Video resolution: QCIF, CIF, QVGA

Photo Format: PEG GIF and BMP PNG Video formats: MP4, 3 GP and FLV

Echo cancellation: G.168 compatible with the LEC, including hands-free(AEC)

VGS, VAD, CNG, Jitter buffer Speakerphone full-duplex

Possibility of registering a domain or implementation of SIP calls Peer to peer

Support for STUN Support for the SIP SMS Adjusting the volume in all modes (headset/ hands-free/ headset wire/ bell) Contrast : 1000 : 1

Brightness : 450cd/m²

Viewing Angle : 178 degrees horizontal / 178 degrees vertical (at contrast ratio 10:1)

Screen orientation Portrait instead of landscape.

Spe of Built-in induction loop(Option)



With induction loop coverage 1M radius.

Supply voltage: 12V DC

Max operation current: 3A

Inputs: internal electret microphone, suitable line level/second microphone

Microphone: sensitivity: 66Dbm to -2dbm Bandwidth 50Hz to 20Khz

Overall Performance: bandwidth at any output level 50hz to 15khz Distortion:<0.5% TGD@1KHZ

DYNAMIC RANGE:>90db Noise:<-86db CMRR:>84DB

Coverage(internal loop)1m radius Input level control Mic:-40+40db

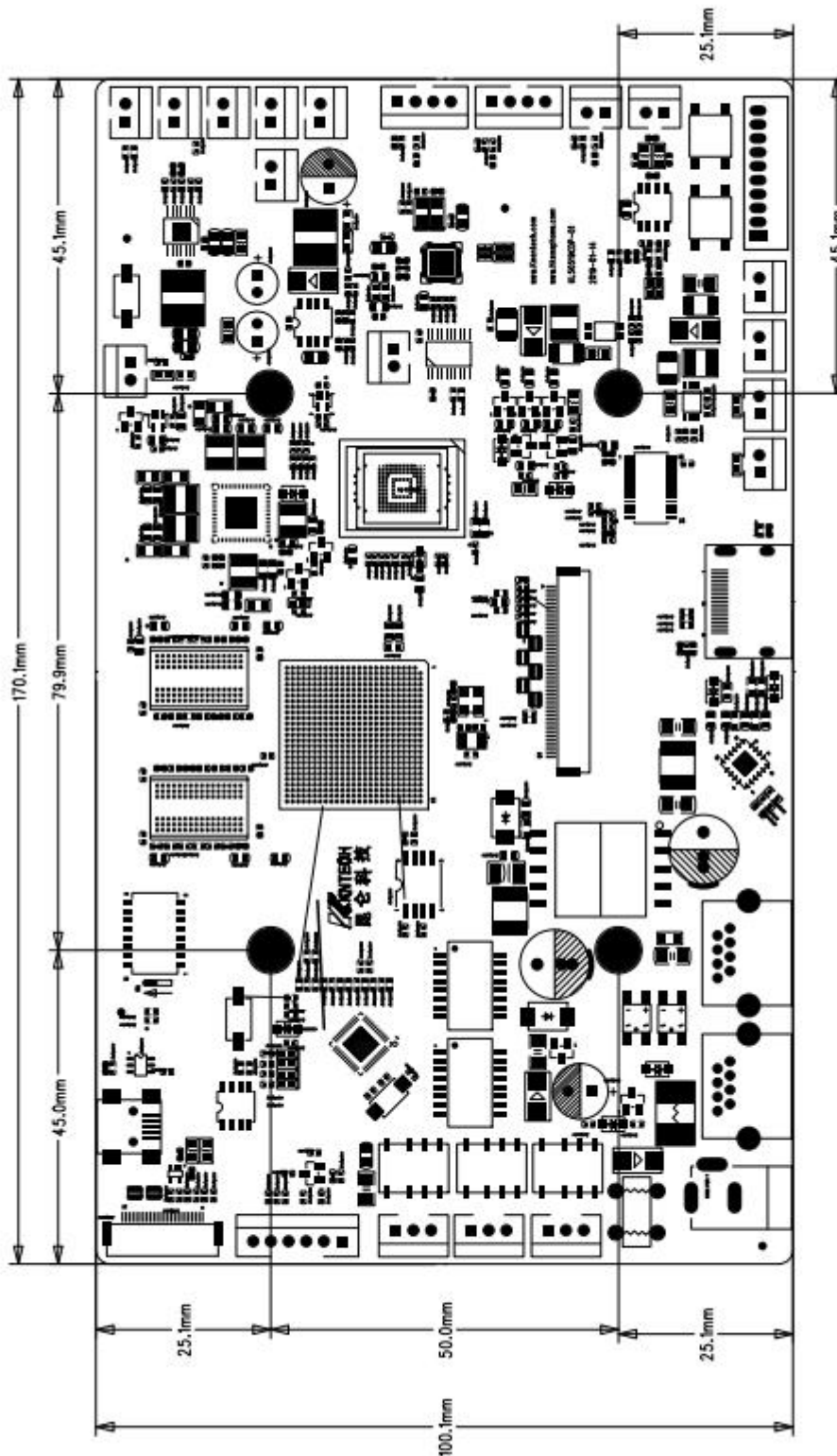
Power output: current 0.8ARMS @1KHZ 3.0apeak

Quality: Tested to and conforms with BS7594 and BS6.83 PART 4, en60118-4

Power consumption: standby 25ma (0.04w) Maximum in use 1.5A(9W)

WIFI SPECIFICATION(Option feature)	
Memory	64MByte DDR2
Flash	4MByte
Connection	1 x Reset button(Reset & Factory Defaults)
	2 x 10/100
	1 x Power DC Jack
Data rate	11b: 11M, 5.5M, 2M, 1Mbps
	11g: 54M, 48M, 36M, 24M, 18M, 12M, 9M, 6Mbps
	11n: 6.5M, 13M, 13.5M, 19.5M, 26M, 27M, 39M, 40.5M, 52M, 54M
	58.5M, 65M, 81M, 108M, 121.5M, 135M, 150Mbps
Transmission mode	DSSS
Standard	IEEE802.11n,IEEE802.11g,IEEE802.11b,IEEE802.3U
Frequency domain	2412—2472MHz
Protocols	CSMA/CA, TCP/IP, DHCP, HTTP, TELNET, TFTP, ICMP
Power consumption	<5W
Power supply	12V/1A

SIZE



CERTIFICATION



RCM: AS/NZS CISPR 32 Australian communications:AS/CA S004
Australian Equipment-safety: AS/NZS 60950.1:2015
EMC: EN50121(Railway application-Electromagnetic Compatibility)

PACKING



Unit size:20*10*10cm Unit: N.W: 0.4KG
150pcs packing box size: 59*47*46cm Unit N.W: 60KG Unit G.W:63KG