

昆 仑 科 技

www.koontech.com

香港昆仑科技（深圳）有限公司

Regular Customer

THALES SIEMENS



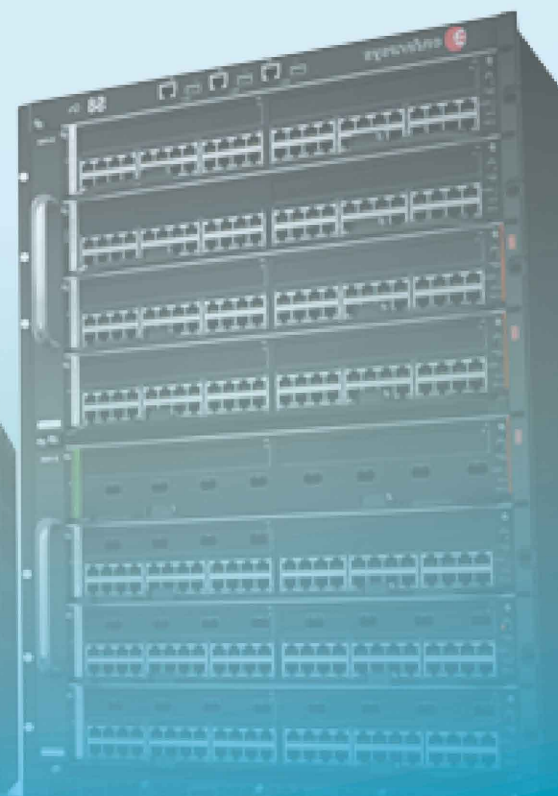
Alcatel-Lucent



HUAWEI

ERICSSON
TAKING YOU FORWARD

AVAYA
The Power of We

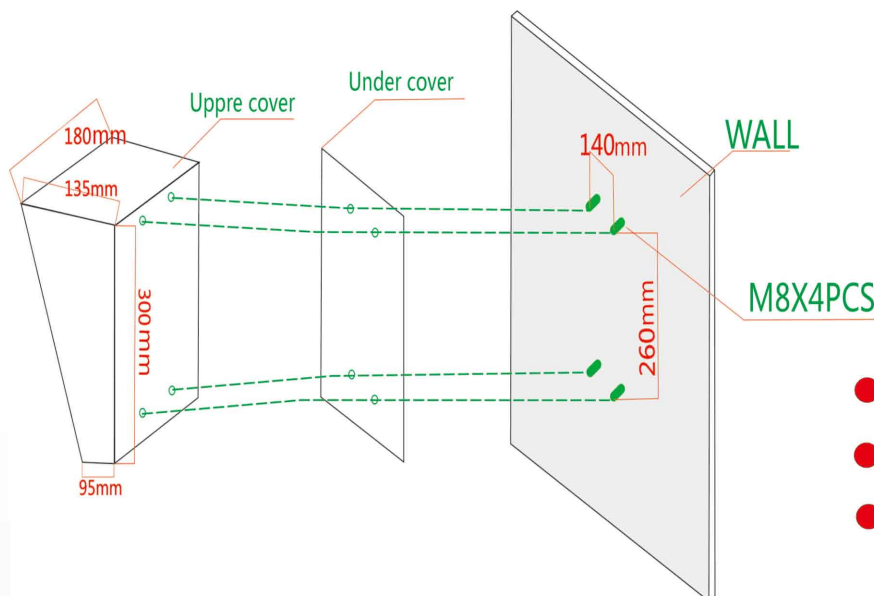


Emergency telephone **KNZD-09A-1T2S**



The most professional manufacture in Asia The exclusive supplier for all Metro project in China

The Weatherproof phone will be designed to work on Railway, metro, tunnel, etc. Housed in robust aluminium die case with spring loaded door, it will offer protection against the outdoor environment, vandals resistance and rot resistance. The unit will meet all the latest European/UK standards for EMC and US FCC, telephony, waterproofing, and lightening protection together with offering the level of performance and reliability demanded in such an environment.



- Standard and SMART Analogue and VoIP-SIP options available
- DTMF(Dual Tone Multi Frequency)
- Matching with most PABX,PBX and PAX systems.

Main Product features

1. Main body with whole stainless steel body, solid and temperature bearable
2. Heavy duty Vandal resistant buttons.
3. Resume lightning proof protection automatically standard to ITU-T K21
4. Waterproof grade about IP65
5. The metal shell is provided with grounding connection device and is absolutely insulated with inner circuit and electric, then has the effect of electromagnetism shield.
6. Support hotline call, can realize ring off automatically if the other side close.
7. Totally adopt SMTC craftwork keep very good quality.
8. The design is super thin and smart. Embed style and hanging style can be chosen.
9. Every call is limited(set by five minutes),auto ring off if time exceeded. (Optional)
10. Colours: RED + Stainless steel colour, If the qty over 100pcs can be To customer specification
11. Trouble alarm send by SMS/GPRS message.

Main PCB

1. Well treated PCB used inside the phone.
2. Robust screw terminals used for the connection of ringer, handset, line in, hookswitch.
3. Selectable 7 minute time out, to release the line if the handset is left off hook.
4. All connectors be greased in production.

Handset

1. Kirk electro dynamic transducer for both handset transmitter and receiver
2. Spring cable or armoured cable to attach the handset to the telephone main unit
3. Stainless steel cable to connect exchange.
4. Inductive coupler fitted for hearing aid compatibility.
5. Handset integrity wiring to enable exchange to check if the phone is still operational.

VOIC OVER IP- SIP (Version)

Connection type: RJ45 Socket inside sealed enclosure

Power supply: External 5V dc

Call set-up Protocol: Session Initiation Protocol(SIP)

Configuration: DHCP or STATIC IP address provisioning



The most professional manufacture in Asia
The exclusive supplier for all Metro project in China

Telephone layout



GSM version

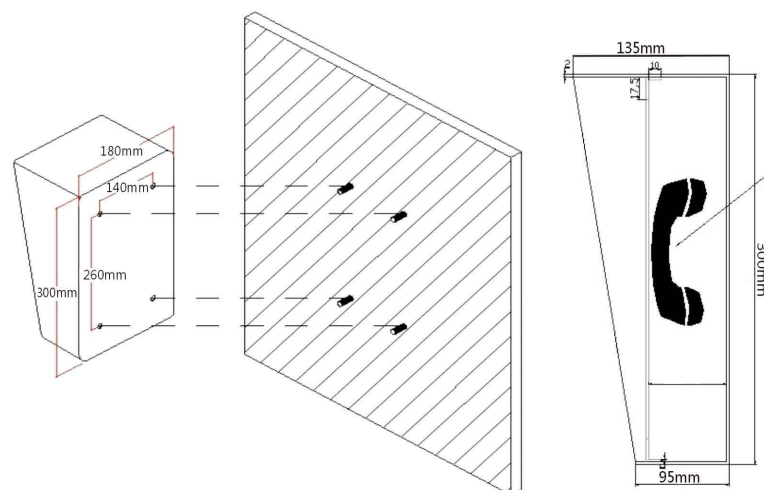
GSM 2G/3G Solar Powered with built-in rechargeable battery

1. Network Interface: GSM Frequency: 850/900/1800 /1900MHZ, 2G, 3G,WCDMA,
2. Ringing: Through internal Speaker/ringer
3. Power Supply: Re-chargeable Battery powered: 9V/14Ah,
4. Solar back-up: 12V/30W
5. Time out: selectable 0-20 minutes
6. Built-in battery standby: 21 days, can improve to 42 days.
7. Built-in battery talking time: 56hours, can improve to 100 hours

TECHNICAL SPECIFICATION

1. Applicable for various types of SPC exchange and dispatching exchange system with feeding voltage of 33V-60V.
2. Ambient temperature:-30°C~70°C Relative humidity:10%~95% Atmospheric pressure: 86~106Kpa Circumstance noise:≤ 60dB (A)
3. Sound level of ringing : ≥85dB (A) .
4. Call transmission index : (7KM)SLR≤12,RLR≤-1, STMR≥10, output impedance is 600Ω.
5. Super strong function is available for dialing 12 groups of numbers stored in the memory (maximum length of each store number is16 digits)

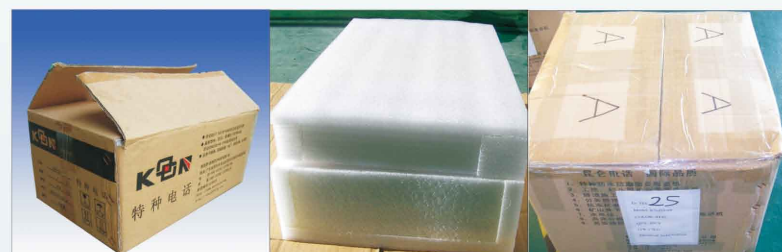
Mounting bracket



Connection cable

Stainless steel connection cable to exchange.
 Well treated keep waterproof.

Packing detail:



Unit size:300*180*135mm , N.W: 3.5KG

1pcs in each inner CTN box, size: 439*277 *191mm G.W: 4.2KG

4pcs in outer CTN box, size: 566 *445*420mm G.W: 18.1KG

Certification:



EMC: EN50121 (Railway application-
 ElectromagneticCompatibility)
 EN55022: emissions
 En55024: immunity

FCC
 ITU-T Recommendations K21